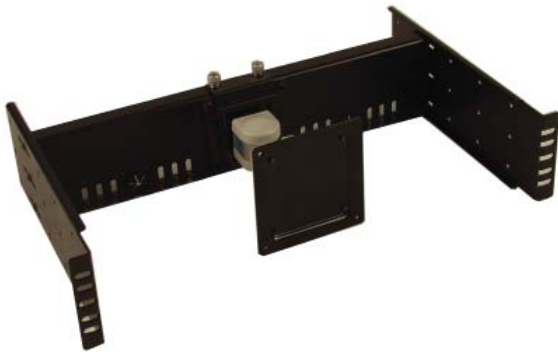


RLCD-FRAME1-K5



LCD Rackmount Kit for standard VESA LCD Monitor/LCD TV up to 32"



Features

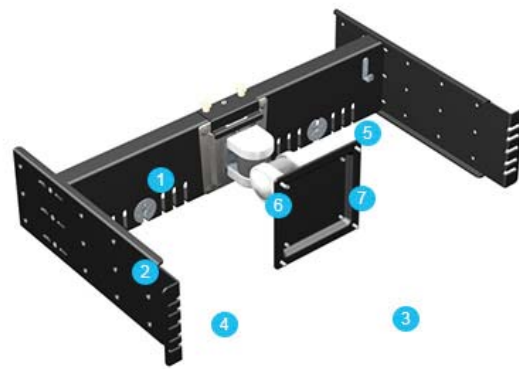
- Tilt up or down 20 to 30 degree
- Rotate to right or left side 20 to 30 degree
- Flushmount LCD monitor against the cabinet
- Quick LCD Monitor attach and deatch desing
- Depth of the monitor mounting point is adjustable
- Supports 75mm, 100 mm and 20mm (optional) VESA mounting holes
- Support Wide Screen LCD Monitor up to 32"

Rackmount monitor is a specially designed monitor to meet the industrial environmental requirement. It can handle vibration, dust, and huge temperature difference in a factory or harsh environment setting. A typical Rackmount monitor can cost from couple hundred to thousands of dollars depends of the features you want.

Not all of the applications need to use expensive rackmount monitor. A simple LCD monitor might just do the job. Here is where our RLCD-FRAME1-K4 comes in. RLCD-FRAME1-K5 provides a simple , low cost means to mount standard LCD monitor into a standard 19" rack enclosure. It supports standard LCD monitor up to 19" into the cabinet. As long as your LCD monitor is not wider than 17.36", you can flush mount it. If you need to use a wide screen monitor, you can readjust our RLCD-FRAME1-K5 to extend the wide screen LCD monitor out of the rack enclosure. For a non- flush mount setup, it supports Wide Screen Monitor up to 32".

The key advantage for using our RLCD-FRAME1-K5 is the flexibility to use any type of standard LCD monitor with VESA mount support (up to 200mm x 200mm) in the market. You are not lock into a propriety LCD rackmount monitor. Using a standard LCD monitor also give you more options for the video interface such as VGA, DVI, HDMI or S-Video connector. In addition, you can also select monitor that comes with build in speaker or touch screen features. These features can be a huge cost saving for you compares with using a rackmount LCD monitor with the same features.

Finally, you can upgrade your LCD monitor any time you want with our RLCD-FRAME1-K5. If you are using a rackmount monitor, there is no upgrade path.



- 1 75mm x 75mm, or 100mm x 100mm VESA mounting plate
- 2 Adjustable 4 way monitor arm.
- 3 Deattachable Monitor arm.
- 4 Cable Access ports
- 5 Adjustable depth mounting holes
- 6 Main Panel

Specification

Model	RLCD-FRAME1-K5
Revision	1.2
Panel Form Factor	3U Rack Space
Bracket Dimension	18.93" (W) x 3.96" (H) x 11.12" (D)
Maximun Monitor Flush Mount Width	17.36" Max
Maximun Monitor Extend Out Width	Total Width of your Rack Cabinet
Maximun Monitor Weight	30.8 Lb (14 Kg)
VESA Mount Support	75mm x 75mm, 100mm x 100mm, 100mm x 200mm and 200mm x 200mm.
Material	Cold Roll Steel
Compliance	RoHs
Weight	20 Lbs
Warranty	Limited 2 years warranty.